

## 12" REMOTE ANNUNCIATOR

### Requirements:

Password required to gain entry prior to exiting alarm monitoring software.  
D-LAN option P/N 0200017, included with purchase of first Remote Annunciator. System 3505 (not included).

### 12" R.A. Specifications

- 12.1" TFT SVGA LCD; max resolution 800x600
- Analog Resistive touch-screen; 35 million touches per lifetime
- VIA® Eden 667 MHz CPU 667 MHz or above on board
- Network (LAN): 10/100 Base-T Ethernet
- System memory up to 1 GB SDRAM
- Built-in speakers
- One Compact Flash® Type II socket (True IDE Mode)
- One Mini PCI socket
- Windows® CE Operating System
- Backlight lifetime 50,000 hours
- 10/100 Base-T Ethernet
- Removable front bezel; front panel protection
- Fanless, ultra-low power consumption
- Operating Temperature: 32°-104°F
- Humidity Tolerance: 10-95% @ 40°C, non-condensing
- Power supply: DC/DC converter

### Product Information

The DIGITIZE Remote Annunciator is a panel computer featuring a 12.1" touch screen display. It is used to provide multiple operator interfaces for one or more System 3505 Universal Receivers\*.

The Remote Annunciator features programmable color and sound schemes (.wav files) for events, historical data, and data export functions. It operates on a Windows CE platform. Each Remote Annunciator is linked to the System 3505 using a standard Ethernet connection, provided by others. Multiple Remote Annunciators may be networked to a System 3505 (or networked System 3505s) to provide specialized alarm monitoring by alarm priority, i.e., a separate Remote Annunciator for fire, security, and/or maintenance. (Multiple RA units require the purchase of the D-LAN Option with Digitize Smart-IP Card; see cut-sheet 750561-0000.)



Operated by touch or with an external keyboard and mouse (provided by others), the Remote Annunciator allows personnel to monitor all System 3505 activity from more than one location. The Remote Annunciator allows key information to be displayed, instant access to key alarm data, filtering by alarm priority, and password protected control of access to system programming and data functions to prevent unauthorized changes and errors.

Operator & dispatcher benefits include: increased efficiency, notification in the event of signal interruption and the ability to export the alarm history log (in comma-delineated files) to other programs (e.g., Excel or Word) for preparation of user-defined reports.

### Optional Features

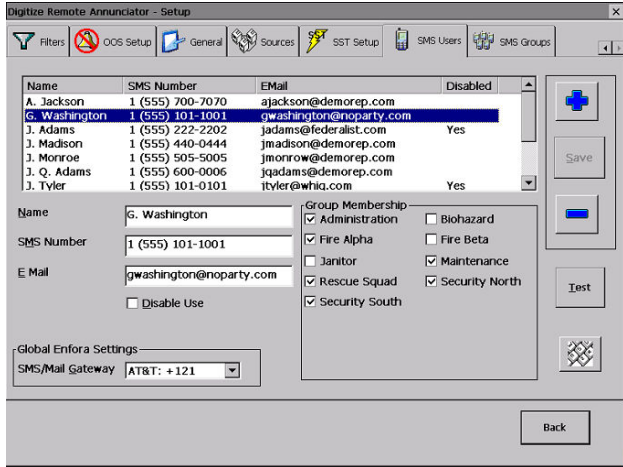
Digitize SMS-Text-2-Cell: Small Message Service Text-2-Cell transmits System 3505 alarm data and user-defined text to pre-programmed groups of designated recipients for alarms, troubles, supervisory and other conditions (based on filter settings selected by user) via a cell phone network. Please see cut-sheet 750574-0001 for more details.

### In/Out of Service

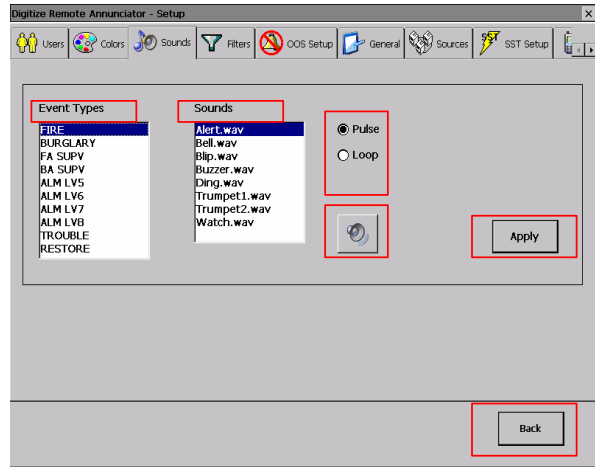
### SST Relay Control

**\*Please note:** Remote Annunciator units and software will NOT operate on System 3000 or System 3500.

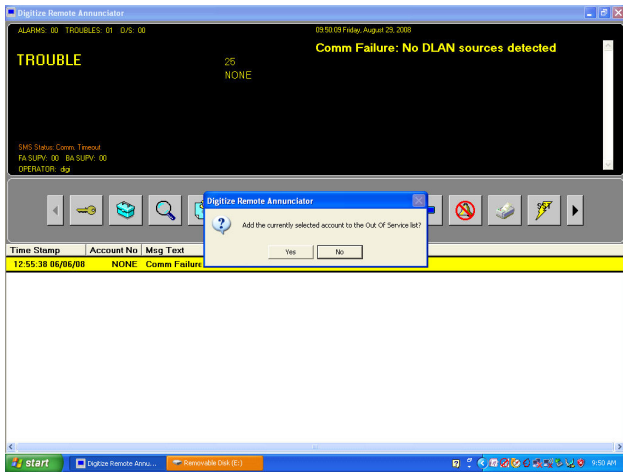
# TYPICAL SCREEN SHOTS



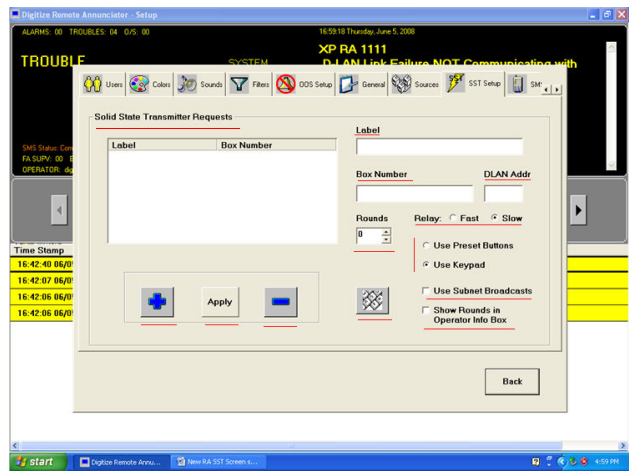
Setup for SMS Users- Add a New User



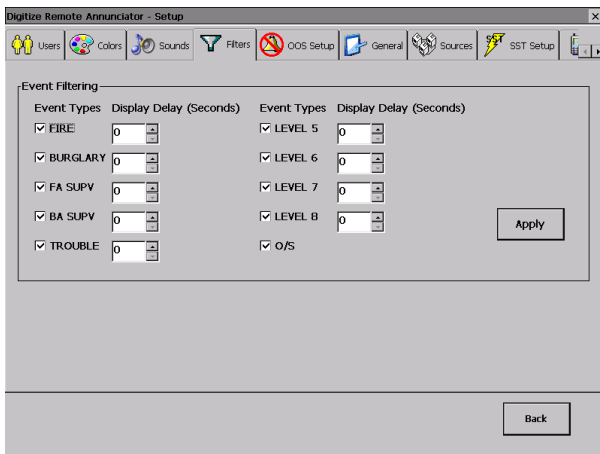
Setup for Sounds—Program Custom Sound Selections



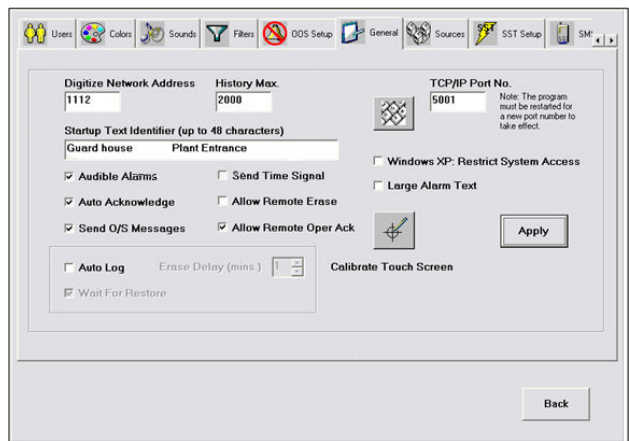
Place an Account into Out of Service (OSS)



SST Setup: Solid State Transmissions



Filtering Setup: Filter Events by Priority



General Setup: Activate Auto Ack, Audible Alarms & More