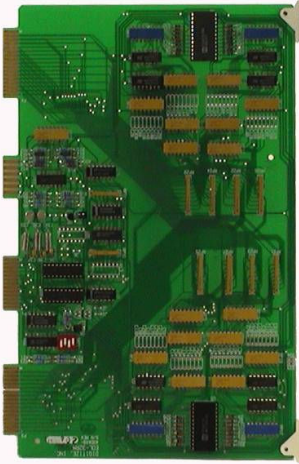


EOL-32RM CARD



Features

- Connects 32 supervised end-of-line inputs
- Standard end-of-line value is 15K, optional values include 2K-22K
- Plugs into 512 Zone card rack
- Monitors contacts up to 10 miles in distance with 15K EOL resistor
- May be mix & matched with RPI-32M cards
- 512 Zone Card Rack can hold up to 16 EOL-32RM cards (refer to cut-sheet 750252 for details)
- NFPA-72 Compliant



Product Information

The EOL-32RM is a plug-in card for the Digitize 512 Zone Card Rack. The EOL-32RM is capable of monitoring a total of 32 end-of-line resistors, supervised alarm points with line resistance of up to 7,000 Ohms. It provides the conversion of an analog alarm signal into the proper format to be processed by the System 3505.

The 512 Zone Card Rack can accommodate up to 16 EOL-32RM interfaces, for a total of 512 alarm points. The EOL-32RM may be used in a chain of interfaces consisting of all EOL-32RMs, or mixed with Reverse Polarity (RPI-32M) cards (in any slot order). The SYSTEM 3505 and the card cage may be extended 500 feet with the ribbon cable interface.

Power to the EOL zone is provided by the System 3505. The EOL-32RM may be ordered with a range of end-of-line resistor values.

The EOL-32RM-F card provides rejection to 60HZ and is used if the induced AC is greater than 2 Volts peak to peak.

The EOL-32RM requires the purchase and installation of the Direct Wire Option (P/N 010001-0055) and the 512 Zone Card Rack (P/N 450517-0001). This Direct Wire Option will provide direct wire capability of up to 512 zones. Each additional 512 Zone capacity requires an additional Direct Wire Option (P/N 010001-0055 and 450517-0001).

Please see reverse for EOL Resistor availability.

SPECIFICATONS

Input Resistance: Up to 7,000 Ohms based on EOL value selected; refer to table (on reverse) for details.

End-of-Line Resistor: 15,000 Ohms standard; 2.1K-22K available at additional cost.

Power: Supplied by System 3505

Scanning Rate: 820 milliseconds at 1,000 active alarm points.

Operating Temperature: 32°-150° F

Dimensions: 19 in. W x 12.5 in. H x 10.5 in. D



END-OF-LINE RESISTOR AVAILABILITY

Value	EOL Value (K Ohms)	Max. Line Resist. (K Ohms)	Max. # EOL-32RM-F cards	Max # EOL-32RM cards		Value	EOL Value (K Ohms)	Max. Line Resist. (K Ohms)	Max. # EOL-32RM-F cards	Max # EOL-32RM cards
27	27	22	32	32		7	7.5	3.5	16	32
15	15	7	32	32		6	6.25	2.9	13	32
13	13.75	6.4	29	32		5	5.0	2.3	10	32
12	12.5	5.83	26	32		4	4.17	1.9	8	32
11	11.25	5.25	24	32		3	3.12	1.45	6	32
10	10.0	4.66	21	32		2.5	2.58	1.2	5	32
9	9.17	4.28	19	32		2	2.12	1.0	4	32
8	8.33	3.89	17	32		-	-	-	-	-

NOTE: Standard resistor is 15K. There is an additional \$250.00 charge for any other resistor value.