

CONFIGURATOR CARDS

ORDERING INFORMATION

SYSTEM 3505*

- 400405-0002 System 3505, DGM Driver RS-422/485
- 400475-0001 System 3505, Audio Modem
- 400407-0001 System 3505 Single RS-232 DB9
- 400407-0002 System 3505, Dual RS-232 DB9
- 400506-0001 System 3505, 62 Micron Fiber with Repeater

- 400424-0000 Rack Driver 32-Line; for MUX 32-line driver rack. Plugs into port 0.
- 400426-0001 System 3505, Hi-Level +/- 12 Volts, Isolated RX
- 400424-0002 Rack Driver, 32-Line; For Network Option, Remote Line Printer option line driver rack and Q-MUX option. Plugs into port 1, 2, or 3.
- 400455-0002 System 3505 FSK, Radio Driver
- 400527-0001 System 3505 LAN, communicates with single Digitize devices over an Intranet (LAN) via LAN protocols.

- 400568-0002 Smart-IP Card, 50 Multiplex
- 400568-0003 Smart-IP Card, 25 Multiplex

DGM*

- 400407-0003 DGM, Single RS-232 DB-9 & Muxpad
- 400407-0004 DGM, Dual RS-232 DB-9 & Muxpad
- 400455-0001 DGM, FSK, Radio MUX & Muxpad
- 400506-0002 DGM, 62.5 Micron Fiber Driver w/ Repeater
- 400506-0004 DGM Single Mode Fiber Driver with Repeater, Special Order
- 400527-0002 DGM, LAN to communicate over an Intranet (LAN), via Ethernet protocols.

Muxpad II*

- 400407-0005 Muxpad II, RS-232, Single DB-9, FACP Annunciator expansion, Muxpad only
- 400407-0006 Muxpad II, RS-232, Dual DB-9, FACP Annunciator expansion, Muxpad only
- 400475-0002 Muxpad II, Audio Modem and DGM

Hardware & Expansion

450550-0001 Mounting Hardware

Includes 4-each (standoffs, screws, and washers)

400476-0001- Quad Serial Port Expander Card

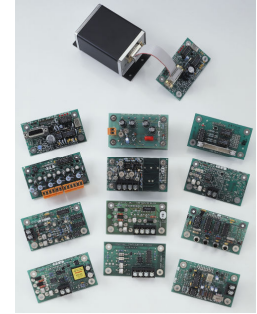
Required to expand beyond 4 serial ports using standard speed UARTS, i.e., 1,200-9,600 BAUD

* see Backwards Compatibility

NFPA-72 Compliant

PRODUCT INFORMATION

The System 3505 has the capability of 32 serial ports. Access to four serial ports is available on the rear of the System 3505. The User installs the proper configurator card to adapt the serial port. The serial ports function only if an option is



Typical Configurator Cards

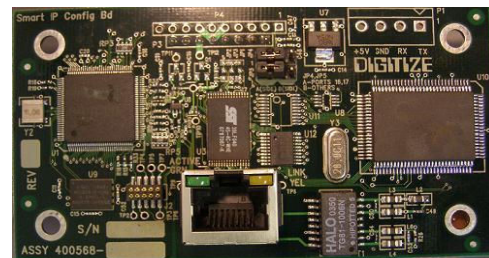
purchased (RLP-1, custom serial output, etc.). Serial Configurator Cards are included with the standard options, or, are quoted as separate items with custom options.

NOTE: Stand-alone configurator cards do not include mounting hardware. Hardware must be ordered separately. Please refer to P/N 450550-0001 when ordering.

Users need to verify their System 3505 can accommodate additional configurator cards prior to ordering. Consult factory for configurator cards not referenced on this cut-sheet.

*BACKWARDS COMPATIBILITY

Most Configurator Cards for the System 3505, Muxpad II and DGM panels are backwards compatible to the System 3500/3000. Please



Smart-IP Card for Network Environments; Mounts on Port 16 of the System 3505

Contact your distributor or the factory prior to ordering.