

## The Intellitize System with MicroMuX

### Intellitize Subscriber Unit Features

- Provides Eight End-of-Line supervised inputs
- Repeats alarm messages from other Subscriber Units
- Dynamically evaluates and stores information on all possible "routes" to the Intellitize Receiver
- Provides a supervised radio comm. link to the System 3505
- Requires the Intellitize Option to interface to the System 3505

### MicroMuX FACP Interface Features

- Precise English text displayed on the FACP is sent to the SYSTEM 3505
- SYSTEM 3505 supervises the MMX card
- Daily test reports Subscriber Units that do not report in after the test
- Provides a "plug and play" capability to monitor thousands of addressable devices connected to the FACP. FUNC buttons also initiate setup, silence buzzers and enable software upgrades
- MMX provides account specific information from the FACP to augment the single ALARM signal sent in via EOL connection to the Alarm or Trouble relay activation at the FACP
- User can query the MMX in any Subscriber Unit to obtain a status count of all the Alarms, Troubles & Supervisory conditions at the FACP

### Product Description

**Subscriber Units:** The key feature of the DIGITIZE INTELLITIZE SYSTEM is the ability of the Subscriber Unit to forward (repeat) messages from other Subscriber Units that are beyond direct radio reach of the central dispatch station. Each Intellitize Subscriber Unit (ISU) dynamically evaluates and stores information on all possible "routes", through which it can send messages to the central station. When an alarm control panel detects an alarm condition, it activates a set of EOL contacts, which triggers the Subscriber Unit to transmit the alarm signal by way of a preplanned route to other Subscriber Units and the Intellitize MultiNet Receiver. The radio data message received by the Intellitize MultiNet Receiver is then sent to the SYSTEM 3505, which is equipped with the Intellitize Option for annunciation, display and printing, thus alerting dispatch personnel and prompting the approved response.

The MicroMuX (MMX) interface permits the exact text from Addressable Fire Alarm Control Panels to be sent to the System 3505 via the Intellitize Subscriber Units (ISU) using the Intellitize MicroMuX Interface and the SeriALL option.

### The MicroMuX (MMX) Interface

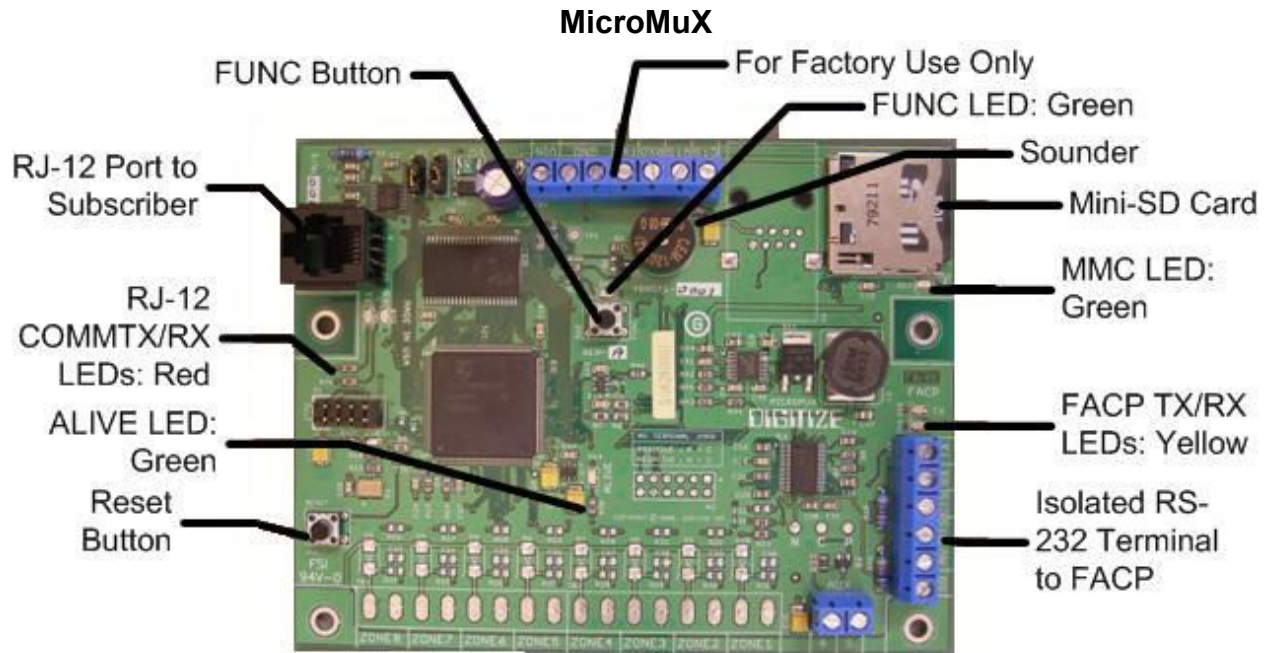
The MMX capability allows the ISU Unit to be connected to addressable Control Panels and process all of the panels' Alarms (Fire & Burglar), Supervisory, Trouble and restore conditions via the Intellitize radio system to the SYSTEM 3505 as an ancillary device. The precise English text displayed on the FACP is sent to the SYSTEM 3505 with the alarm activation. The SYSTEM 3505 supervises the MMX card and presents a daily test report from the Subscriber Units that do not report in after the test. The MMX card supervises its connection to the FACP. If the SYSTEM 3505 is taken OFF line, all of the Alarm information, including the FACP text, is held in memory until it can be retrieved by the SYSTEM 3505 when it is placed ON line. The MMX can be interfaced to a variety of FACPs in Standalone or Networked configurations.



An Intellitize Subscriber Unit w/ MMX Installed

Digitize Intellitize Subscriber Units with MMX are available for Standalone FACPs (ISMx-S) and for Networked FACPs (ISMx-N). Please see reverse side for a recent list of available interfaces. For more information regarding MMX, please refer to cut-sheet 750603-0000.

# The Intellitize System with MicroMuX



## ISMX-S and ISMX-N: INTELLITIZE SUBSCRIBER UNITS and STAND ALONE and NETWORKED MicroMuX INTERFACE TO ADDRESSABLE FACPs

### IMPORTANT NOTES:

- MMX card draws 100 mA at 12 VDC power from the Intellitize Subscriber Unit, which requires installer to properly size battery backup.
- Operates with the System 3505 only (not included)
- SYSTEM 3505 must be equipped with INTELLITIZE Option and SeriALL Option
- **ISMX-S-FULL** Units include Intellitize Subscriber Unit and MicroMuX Standalone Interface and one each, lighting protector, 16.5VAC Transformer, 6db UHF Outdoor antenna with Radials, 25 foot pre-assembled cable and 7 Ampere Hour 12 volt battery
- **ISMX-S-LITE** Units include Intellitize Subscriber Unit, MicroMuX Standalone Interface, 16.5 VAC Transformer and Indoor antenna
- Other antennas are available at additional cost. Please consult factory.

### List of MMX Interfaces to Addressable Fire Alarm Control Panels

#### ISMX-S Stand Alone FACPs

FCI -7100, -7200, E-3  
Gamewell-Flex 600 Series with and without Annunciators, and E-3  
Notifier -1010, -2020, -3030, and -640  
EST-IRC-3, EST-2 and EST-3  
Spectronics -MX  
Simplex-Grinnell -4100, -4100U, -4010, -4020, 4120  
Mircom-FX-2000  
Autocall TFX-800

#### ISMX-N Networked FACPs

FCI -7100, -7200, E-3  
Gamewell-Flex -600 Series with and without Annunciators, and E-3  
Notifier- 3030 and 640 (NCA)  
EST-2 and -3  
Simplex-Grinnell -4100, -4100U, -4020 & -4120